

ZEPHYR ARCHITECTS

47 Concord Sq.

Location

South End, MA

Use

Multi Family Residential

Size

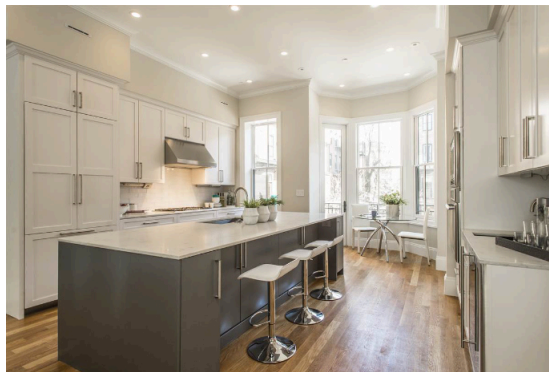
6,000 sq.ft.

Cost

\$2.4 Million

Constraints

Historic Preservation



Situated in Boston's South End, 47 Concord Avenue is a meticulous restoration of a historic brownstone transformed into three luxury residential units. This project skillfully blends historic preservation with modern design, enhancing the neighborhood's architectural fabric. The front façade's original masonry, railings, and brick molds were restored, preserving the building's character. Modern updates include large rear windows, added decks, and reconfigured interiors, creating two duplexes and one floor-through unit. The design balances historical integrity with contemporary living, offering open floor plans, high-end finishes, and outdoor living spaces that enhance urban life.