

ZEPHYR ARCHITECTS

511 Mass Ave

Location

Roxbury, MA

Use

Multi Family Residential

Size

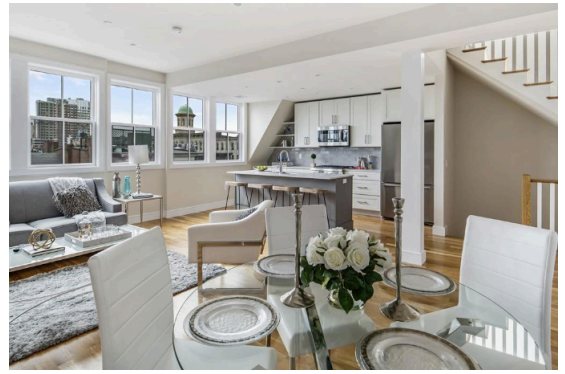
6,082 sq.ft.

Cost

\$2.4 Million

Constraints

Historic Preservation



Positioned in Boston's vibrant South End, 511 Massachusetts Avenue is a restored historic bowfront building that elegantly combines classic architecture with modern living. The front façade preserves period-specific details like ornate brickwork and bay windows, while the reimagined rear introduces expansive windows and projecting decks, offering a contrast that bridges past and present. The interior transformation into five luxury condominiums features open floor plans, high-quality finishes, and abundant natural light, creating sophisticated and functional spaces that honor the building's historical character.