

ZEPHYR ARCHITECTS

155 N. Washington

Location

Boston, MA

Use

Commercial

Size

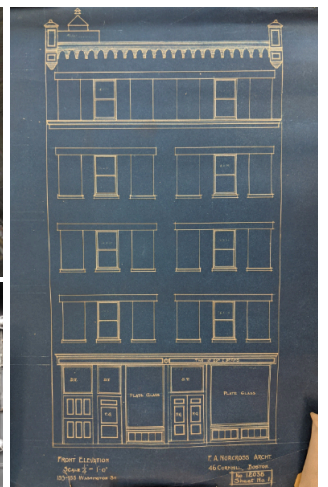
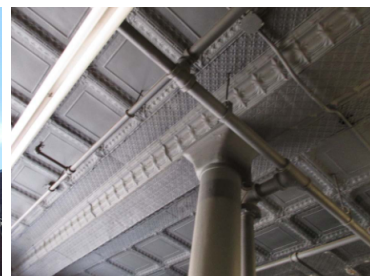
22,600 sq.ft.

Cost

\$5 Million

Constraints

Historic Tax Credits



155 North Washington Street is an adaptive reuse of a historic commercial and light industrial building in Boston's North End. Originally built at the turn of the century as a pair of light manufacturing facilities it transitioned in later years to be the home of the Eastern Bakers Supply Company. Upon the departure of Eastern Bakers Supply,

Zephyr was tasked with breathing new life into the building by adapting the historic structure into a modern retail and office building. The project received both federal and state historic redevelopment tax credits to ensure that this unique re-imagined building will continue to anchor the northern end of the North Washington corridor for years to come.