

ZEPHYR ARCHITECTS

# 95-123 Marcella St

## Location

Highland Park, Boston, MA

## Use

Multi Family Residential,

## Size

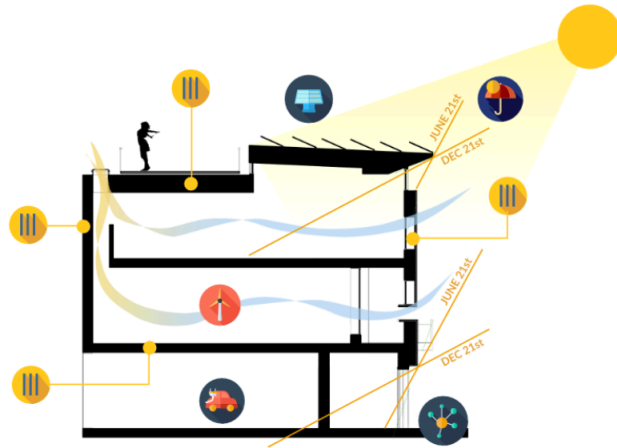
15,600 sq.ft

## Cost

\$4.7 Million

## Constraints

Affordable Housing and  
E+ Construction



Our design for 95-123 Marcella Street responds directly to the natural contours and landmarks of the site, creating a dialogue between the built environment and the surrounding landscape. The project's energy-positive framework allowed us to explore innovative ways to integrate sustainability while maintaining the flexibility to adapt the design across various urban contexts. Each of the twelve units is laid out with efficiency and natural light in mind, with the architecture embracing natural materials, open spaces, and garden elements that enrich the living experience.

By employing a minimalist yet functional aesthetic, the design balances environmental responsibility with livability. The integration of large windows and thoughtful green spaces fosters a strong connection between residents and their surroundings. Our use of natural materials, such as wood and glass, complements the neighborhood's historical character, while the design's clean lines and open floor plans bring a modern sensibility to the site. This approach exemplifies a forward-thinking architectural model for sustainable, affordable housing.