

ZEPHYR ARCHITECTS

The Arch House

Location

East Boston, MA

Use

Multi Family Residential

Size

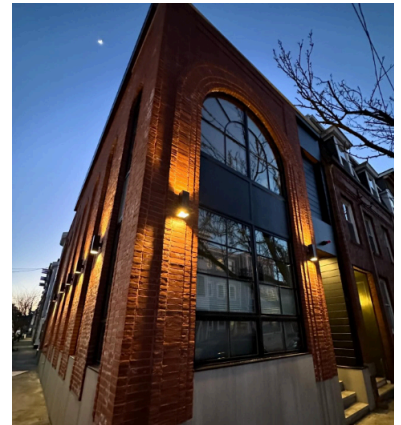
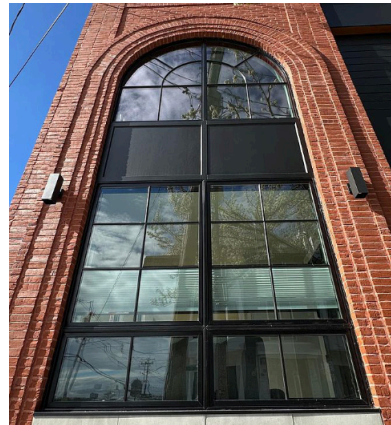
2,700 sq.ft.

Cost

\$1 Million

Constraints

Existing Foundation



The Arch House is a thoughtfully designed two-family residential building located in East Boston, inspired by the robust architectural character of historic firehouses. The design by Zephyr Architects reinterprets this iconic style, incorporating elements such as brick facades and a series of gracefully curved arches that evoke the grandeur and strength of the past.

At street level, large windows framed by the rhythmic repetition of arches give the building a timeless quality, creating a sense of openness and connection to the neighborhood. The upper floor, set back from the main facade, contrasts with the more traditional elements below. It features modern, expansive windows that flood the interior with natural light while providing sweeping views of the surrounding area. The blend of classic materials like brick with contemporary design elements creates a dynamic and enduring presence, integrating seamlessly into the fabric of East Boston's evolving architectural landscape.