

ZEPHYR ARCHITECTS

Everett St

230

Location

Boston, MA

Use

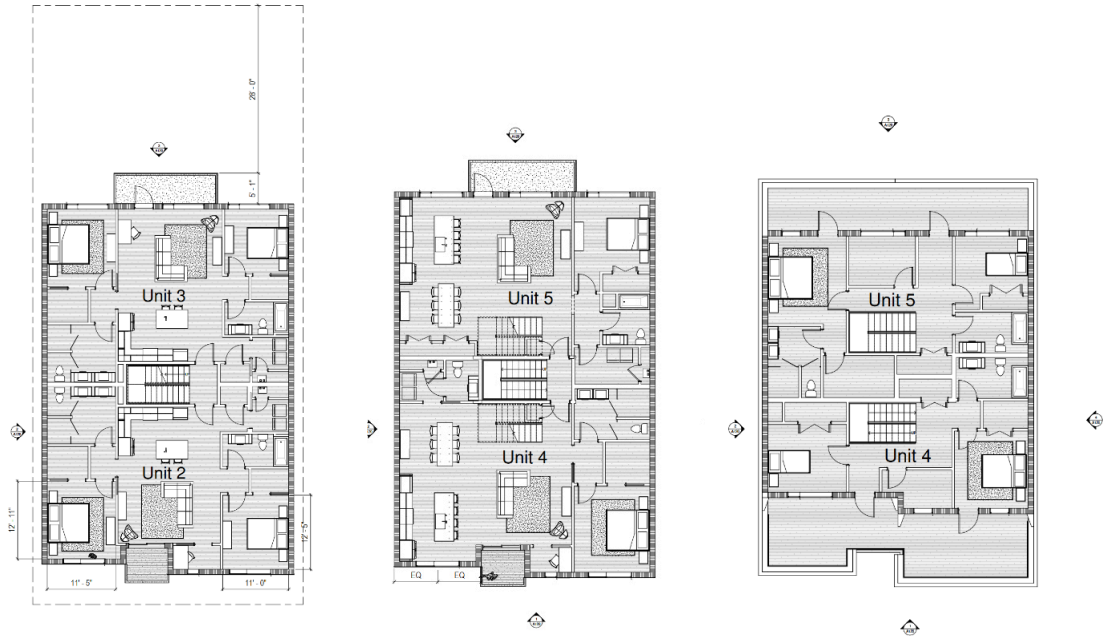
Multi Family Residential

Size

7,712 sq.ft.

Cost

\$2.1 Million



Located in the heart of Jeffries Point, East Boston, 230 Everett Street is a meticulously designed five-unit multifamily residence that embodies elegance and thoughtful urban living. This well-mannered building presents a harmonious blend of traditional and contemporary architectural elements, adding sophistication to the vibrant neighborhood.

The design features a classic brick façade on the ground floor, providing a solid and timeless foundation that resonates with the area's historical context. Above, crisp white clapboard siding adds traditional New England charm, seamlessly transitioning between the sturdy base and elevated levels. Setback walk-out balconies accented with warm wood details offer residents private outdoor retreats, enhancing the façade with depth and texture while promoting a connection to the surrounding urban environment. By integrating traditional materials with modern design principles, 230 Everett Street enriches the streetscape of Everett Street, demonstrating how new construction can honor local heritage while embracing innovation.