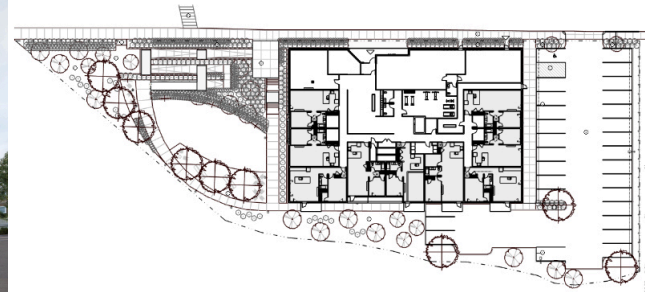


ZEPHYR ARCHITECTS

The Moseley



Location

Dedham, MA

Use

Multi Family Residential

Size

69,000 sq.ft.

Cost

\$24.2 Million

Constraints

Adjacent to Charles River

Situated along the Charles River, The Moseley honors the site's legacy as the former Moseley Dance Hall. The mixed-use development uses brick and well-proportioned volumes to ground the structure, while a dynamic central façade with balconies brings vitality reminiscent of the dance hall's spirit. With retail spaces at ground level and 51 residential units above, it activates the street and enriches the community fabric. Sustainable design principles are emphasized through durable materials and energy-efficient systems, seamlessly connecting residents to both their community and natural surroundings.